

**World Leader in Sophisticated Packaging Systems****MSD-S 22** Manual Side Drive**series overview**

The BestPack® MSD Semi-Automatic Uniform Carton Sealer is our most popular top of the line operator-fed and adjustable carton sealing machine, designed to cater to the needs of light-to-heavy duty uniform carton closure applications.

All systems incorporate our exclusive pop out pressure sensitive "High Speed" tape heads with patented tab adjustment, and the dual (telescopic) masts allow for an extra 4" carton height extension on the upper assembly.

Our stainless steel model comes complete with stainless steel "high speed" tapheads.

**major features**

- Two Side Belts
- Telescopic Mast Design
- Extra 4" Carton Height Adjustment Available on Upper Assembly
- Adjustable Bed Height 24.6" to 30.75"
- Width/Height Adjustment either side of machine
- Exclusive 4 roller top compression
- Tape Roll Lengths: 1000 yd., 1500 yd., 2000 yd.
- Heavy Duty Frame
- UL Approved Electrical Parts
- Designed for uniform applications Capable of Interchanging 2" or 3" Tape Heads
- Electrical on/off box can be mounted on either side of machine

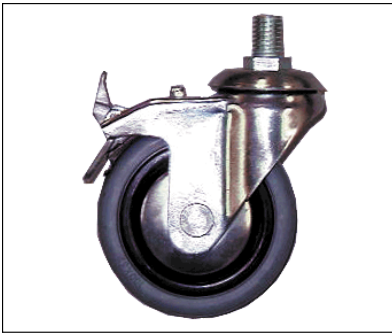
**standard features**

- Exclusive Pop-out pressure sensitive "high speed" tape head with patented tab adjustment and noise reduction arm
- Operation Manual
- Stainless Steel

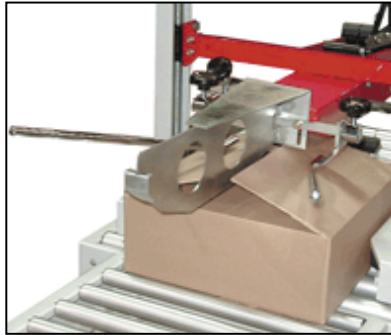
**World Leader in Sophisticated Packaging Systems**

**optional features**

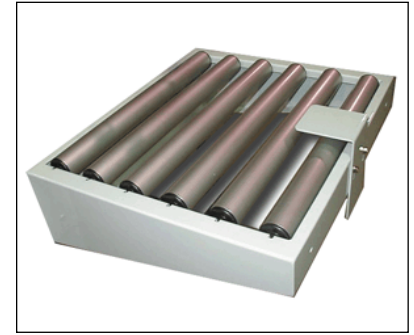
- Spare Parts Kit
- High Speed Motor Upgrade (Up to 125 ft./mm.)
- Motorized Height and/or Width Adjustment
- Interlock Safety Gates



**Locking Castors**



**3 Flap Folder**



**Infeed/Exit Conveyor w/ Stabilizer**

**machine & carton specifications**

- Power Requirements: 110 Volts 60 Hz
- Speed: Up to 40 cartons/minute
- Tape Head: Standard: 2"; Available: 3"
- Shipping Weight: 342 - 550 lbs

**series comparison table**

Model	Machine Size	Carton Range	Cartons/Min.	Shipping Weight (lbs.)
MS 20-2 2" Tape Head	39.4" x 28.5" x 35.0"	(6.0"-U) x (4.25"** - 20.5")	Up to 40	263
MS 20-3 3" Tape Head	39.4" x 28.5" x 35.0"	(6.0"-U) x (5.25"** - 20.5")	Up to 40	263
MSD 22-2 2" Tape Head	39.4" x 32.8" x 55.5"	(6.0"-U) x (4.25"** - 20.5") x (3.25"- 20.5")	Up to 40	342
MSD 22-3 3" Tape Head	39.4" x 32.8" x 55.5"	(6.0"-U) x (5.25"** - 20.5") x (3.25"-20.5")	Up to 40	342
MSD 23-2 2" Tape Head	46.3" x 36.0" x 65.5"	(6.0"-U) x (4.25"** - 20.5") x (3.9"-30.0")	Up to 40	390
MSD 23-3 3" Tape Head	46.3" x 36.0" x 65.5"	(6.0"-U) x (5.25"** - 20.5") x (3.9"-30.0")	Up to 40	390
MSD32-2 2" Tape Head	39.4" x 43.8" x 55.5"	(6.0"-U) x (4.5"-30.0") x (3.9"-20.5")	Up to 25	550
MSD32-3 3" Tape Head	39.4" x 43.8" x 55.5"	(6.0"-U) x (5.5"-30.0") x (3.9"-20.5")	Up to 25	550

\* All specifications capable of customization

\*\*With skid plates